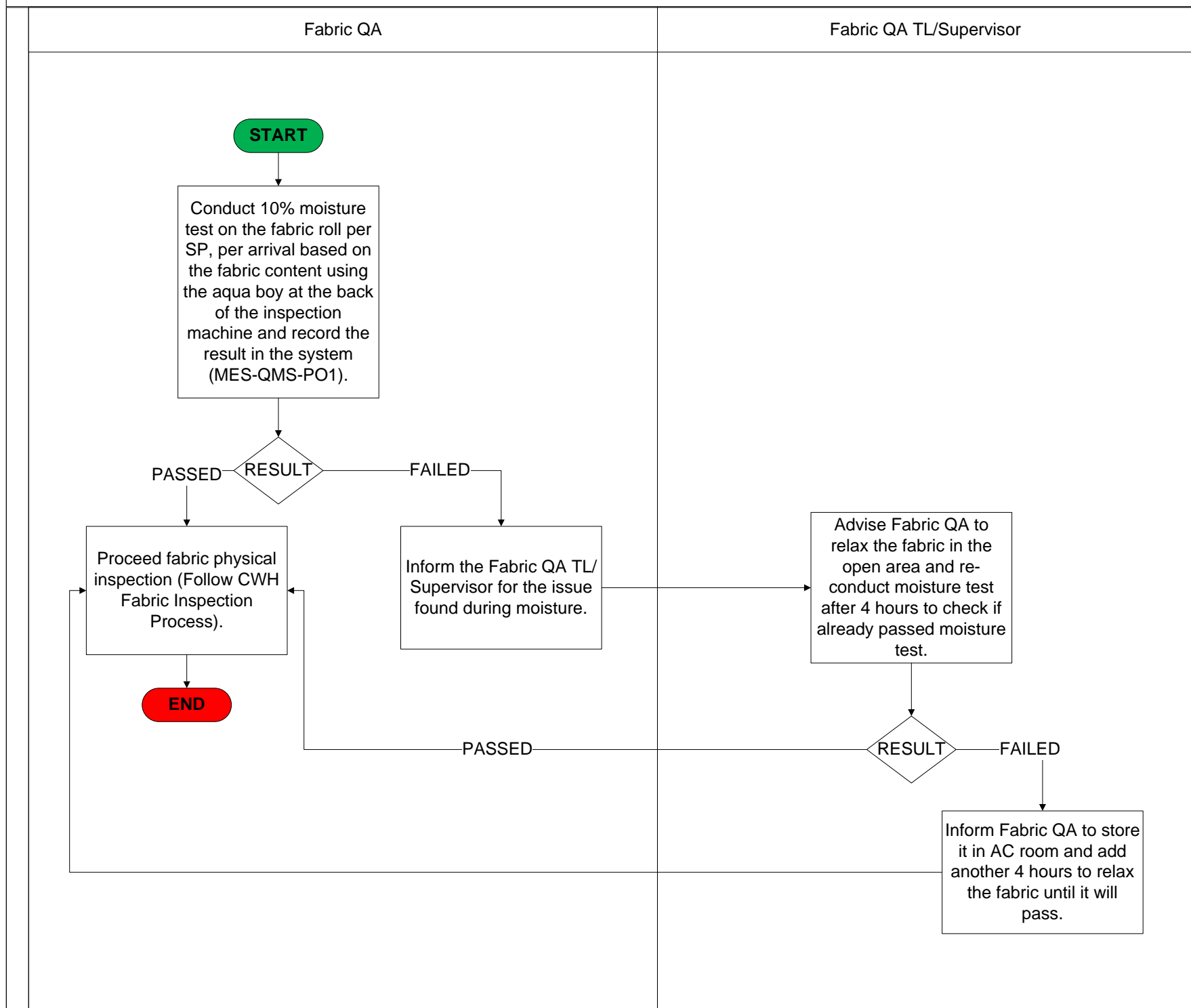


CWH Moisture Test



Factory Moisture Test (Sewing Line) - For below 99% Cotton Fabric Composition

QC TL

CFA

START

Get 3 pieces unpacked garments per style/article/line/shift.

Conduct a garment moisture test based on the fabric content using the digital moisture meter and record the results in the Garment Moisture Tracking Report.

PASSED

RESULT

FAILED

Forward the garments to the packer for packing (Follow Packing Process).

Inform the packer to place it in the quarantine area for 1 hour and re-conduct moisture test until it will pass.

END

START

Conduct a moisture test of the carton (outer long flap, inner short side, and bottom long flap) using the digital moisture meter to check the moisture level based on standard, and record the results in the Garment Moisture Tracking Report.

PASSED

RESULT

FAILED

Proceed to another line to conduct moisture.

Inform the packer to place it in the quarantine area for 1 hour and re-conduct moisture test until it will pass.

START

Get 3 pieces packed garments from the top, middle, and bottom from the closed cartons per line/style/PO/day.

Conduct a garment moisture test based on the fabric content using the digital moisture meter and record the results in the packing guide and E-Inspection.

PASSED

RESULT

FAILED

Proceed to conduct quality inspection (Follow Adidas CFA Inspection Process).

Inform the packer to place it in the quarantine area for 1 hour and re-conduct moisture test until it will pass.

END

START

Conduct a moisture test of the carton (outer long flap, inner short side, and bottom long flap) using the digital moisture meter to check the moisture level based on standard, and record the results in the packing guide and E-Inspection.

PASSED

RESULT

FAILED

Proceed to conduct quality inspection (Follow Adidas CFA Inspection Process).

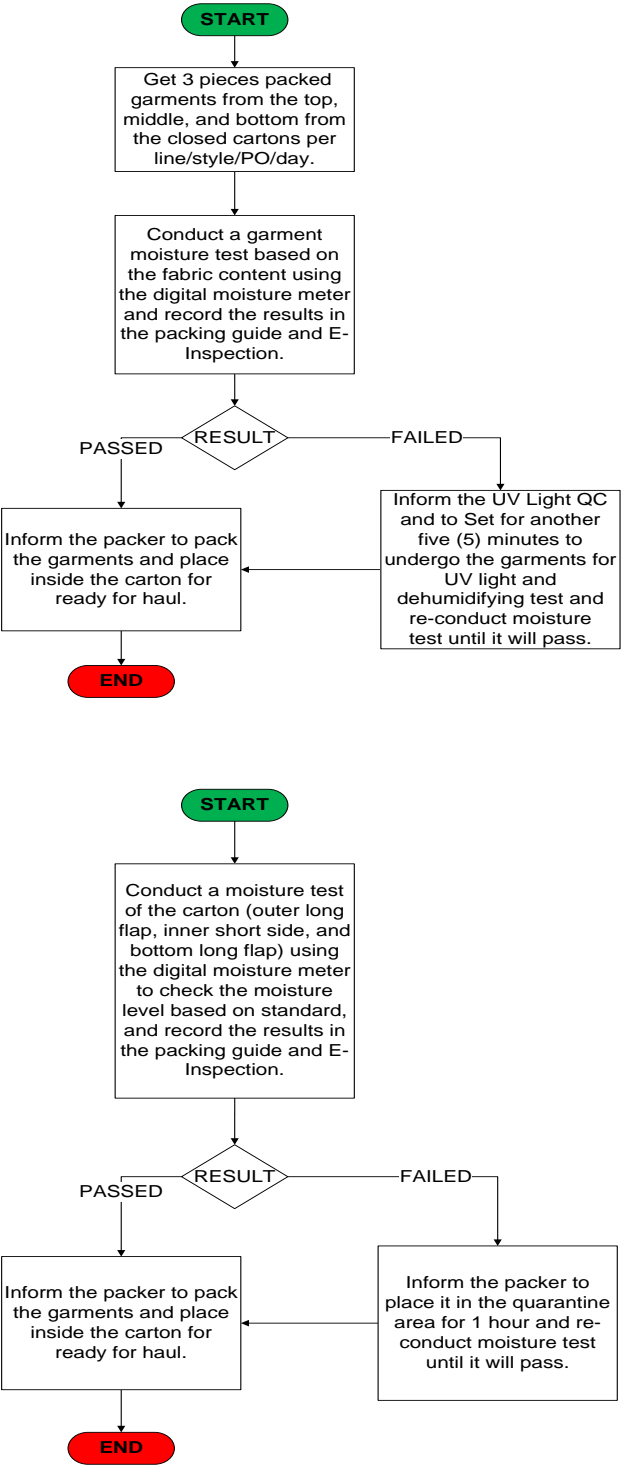
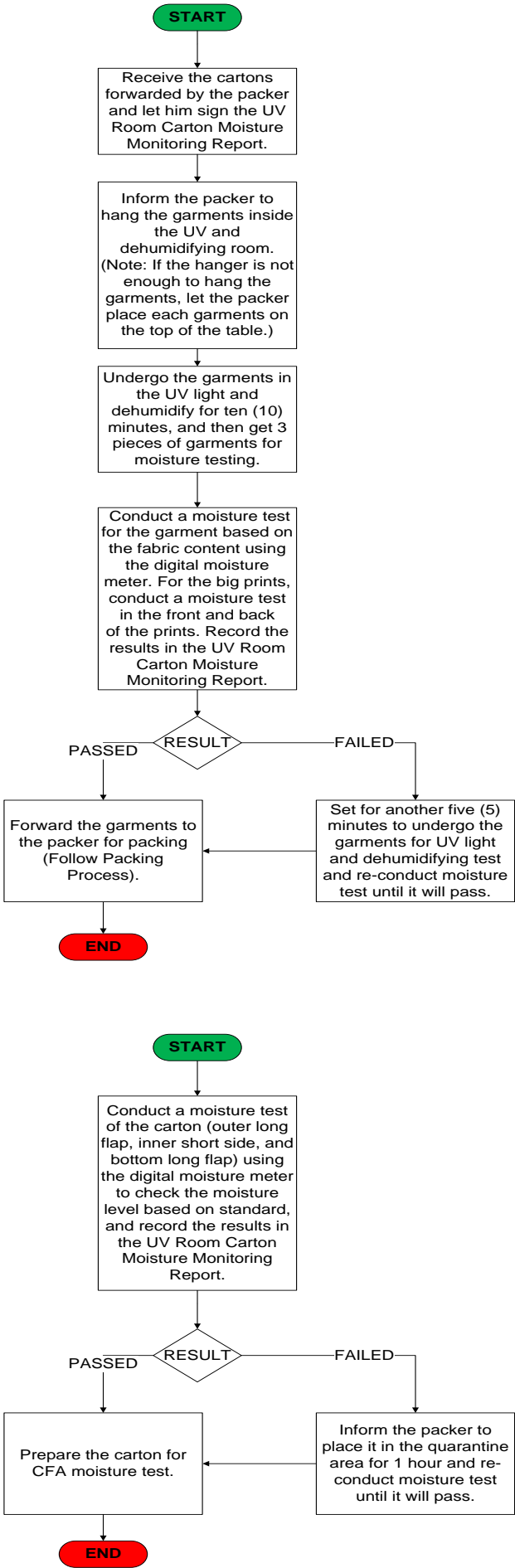
Inform the packer to place it in the quarantine area for 1 hour and re-conduct moisture test until it will pass.

END

Factory Moisture Test (UV and Dehumidifying Room) - For 100% Cotton Fabric Composition and Big Prints (≥290mm*210mm)

UV Light QC

CFA



FG Moisture Test on the Container Van

