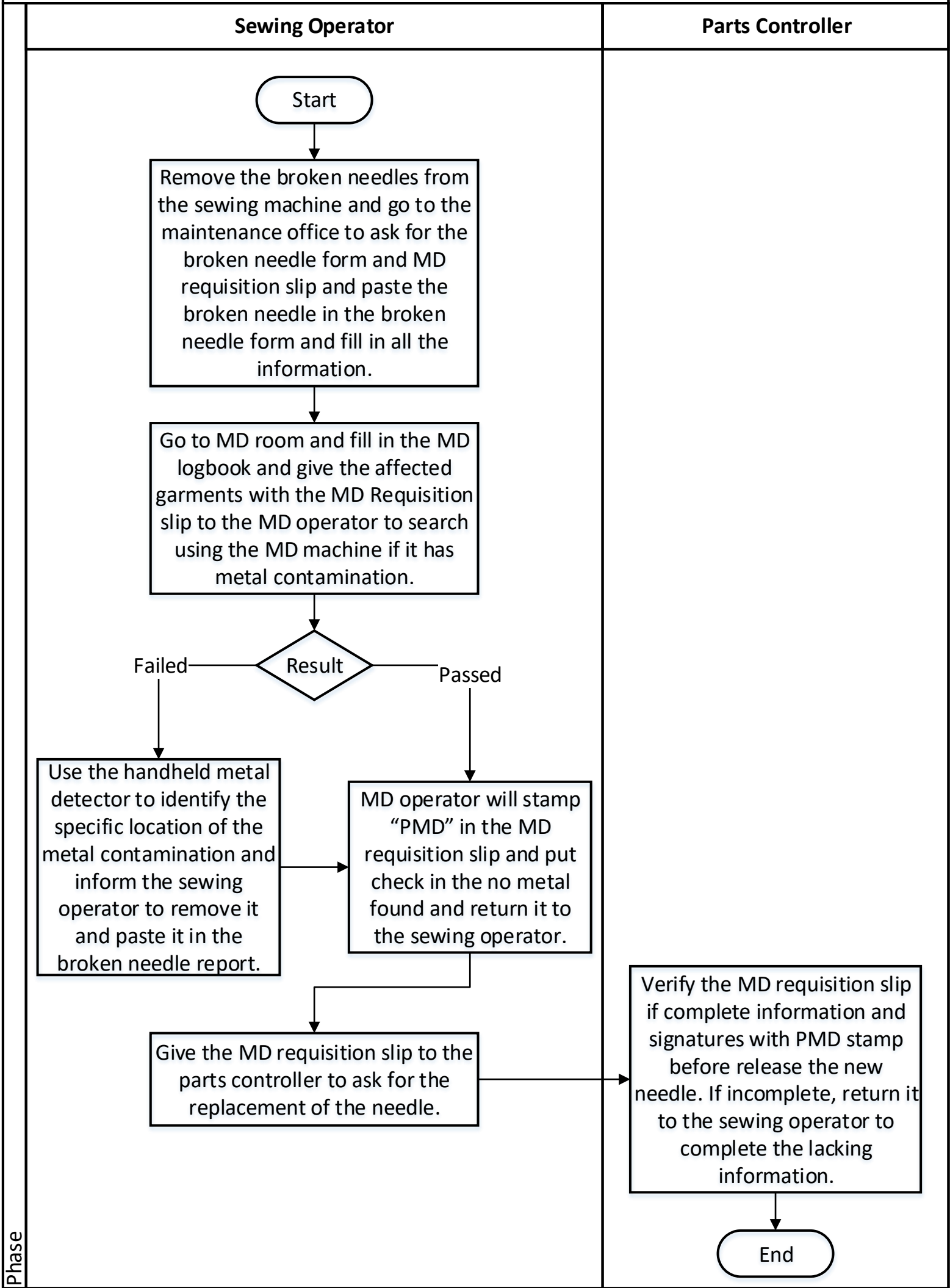
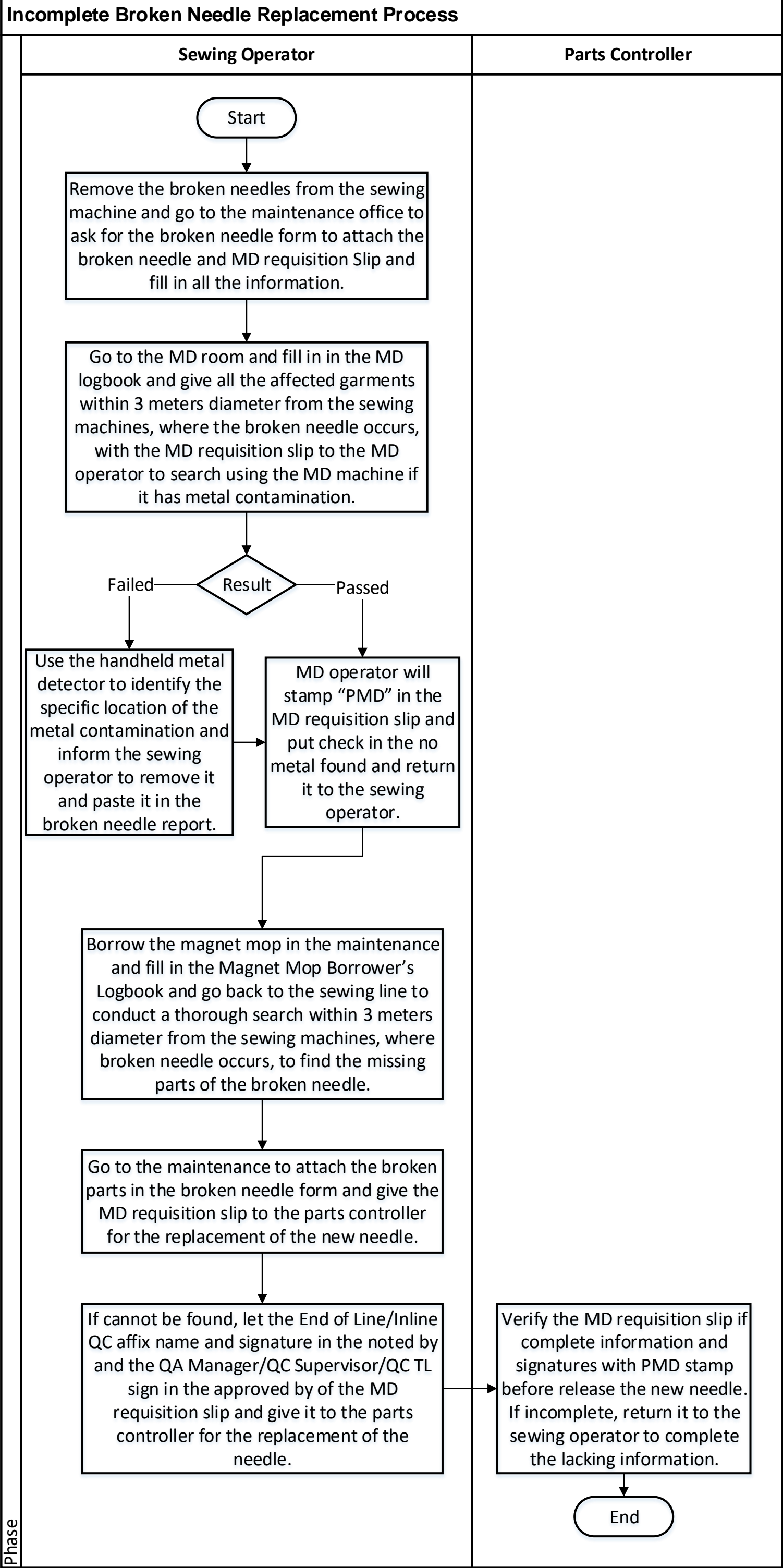


Complete Broken Needle Replacement Process





Dull/Curve Needle Replacement Process

Phase

Sewing Operator

Parts Controller

Start

Remove the dull/curve needle from the sewing machine and go to the parts controller to ask for dull/curve needle form and fill in all the information and paste the dull/dent needle and return it to the parts controller for the replacement of the needle.

Verify the dull/curve form if complete information before release the new needle. If found discrepancy, inform the sewing operator to correct it.

End